

Technical Rider

" Vive l'Armée " by SUPERAMAS

Technical director, Stage designer

Jérôme DUPRAZ +33 684106615 jerome@superamas.com

Light designer

Henri Emmanuel DOUBLIER +33 662873074 henri@superamas.com

Sound designer

Olivier TIRMARCHE +33 614012325 olivier@superamas.com

Video designer

Vincent TIRMARCHE +33 670773335 vincent@superamas.com

Production, Transport manager

Caroline Madl +43 699 11592981 caro@superamas.com

• LIGHT •

Supply by the theater / Fourni par le théâtre :

- 1 blinder x4 on stand
- 28 floodlight 1kw
- 5 PC 2kw
- 16 PC 1kw
- 9 par64 cp61
- 8 profiles 1kw 36°
- 1 profile 2kw 50°
- 2 profiles 2kw 36°
- 5 stands 2m
- 1 strob (Atomic DM3000)
- 10 ghost loads
- DMX cables 5pin for 2 smoke machines 1strob par
- DMX cable 3pin for Sunstripe, 2 mac aura, 2 0-10v strob lamp and 2 led Bricks
- Filters:

Floodlight : 6x201 6x249 6x204 10x119

PC 1kw : 6xR119 10xR119+201

PC 2kw : 1x110 1x248 1x204 1x764 1x201

profile 1kw : 8xR119

profile 2kw : 3xR119

Superamas brings:

- 2 moving heads type Martin Mac Aura
- 4 sunstripe active
- 2 littles led
- 2 strob par
- 2 red heads on stands
- 2 star flash lines
- 2 led rvb
- 2 ladders to hang up projector on sides
- 2 reflectors hang up on sides
- We bring our own light board a Lanbox with 1 out dmx512.

We can adapt the light to all technical rider of the venues, to rent the minimum of light.

IMPORTANT: Its absolutely necessary that one of the technicians is ready to work as a light stand-in!

Nous avons absolument besoin qu'un des techniciens de l'équipe du théâtre nous aide en faisant la doublure lumière sur le plateau!

• SOUND •

- 1 digital mixing board type Yamaha QL1 with 8 outputs or similar (Yamaha LS9-16, Yamaha CL5) / Une table de mixage numérique Yamaha QL1 avec 8 outputs - 16 channels input - 8 groups output - 2 aux output - Graphic Eqs 31 bands (Yamaha LS9-16, Yamaha CL5)
- 4 wireless handset / 4 micros HF main (Sennheiser, Shure, AKG...)
- **Speakers set-up (see the plans / voir les plans):**
- FRONT / FACE [1+2]
- 2 or 4 FRONT SPEAKERS set on the Sub boxes or hanged (front speakers should be on stage, or low hanged) / 2 ou 4 HP façade installé sur les caissons Sub Bass ou accroche basse. Ref: L.Acoustic MTD 112 or 115, d&b C90 or C60, John Meyer, EAW, KS, Nexo PS15: puissance en fonction du théâtre / according to the theater volume.
- 2 SUBS bass speakers on stage LR / 2 caissons Bass sur scene cour-jardin
- CLUSTERS / CENTRE [3+4]
- 2 speakers in central cluster position / 2 HP en position centrale haute. Ref: L.Acoustic MTD 112 or 115, d&b C90 or C60, John Meyer, EAW, KS, Nexo PS15: puissance en fonction du théâtre / according to the theater volume.
- BACK / SUROUND [5+6]
- 2 speakers hanged in back position / 2 HP en position arrière gradins haute. Ref: L.Acoustic MTD 112 or 115, d&b C90 or C60, John Meyer, EAW, KS, Nexo PS15: puissance en fonction du théâtre / according to the theater volume.
- WEDGES / RETOURS [7+8]
- 4 stage monitors set on the floor / 4 retours de scene (stage monitors, like L.Acoustic MTD 112 or nexo PS15)
- Amplification system + speakers cables for the whole system
- 12x JACKstereo/XLRmale adaptors cables for 12 outputs sound-cards jack (8 sound computer + 4 video computer)

IMPORTANT:

- All the speakers except Subs must be equalized by graphic Eqs = 4 Eqs stereo / tous les HP doivent pouvoir être equalisés avec 4 graphics Eqs 31 bandes de bonne qualité (klark, BBE, dbx...) ou ceux de la console;
- We need a regie lamp for the mixing board / nous avons besoin d'une lampe régie pour la table de mixage.
- in case of analog mixing board, we need 1 stereo compressor / dans le cas d'une table analogique, prévoir 1 compresseur stereo (type dbx, Klark)
- in case of analog mixing board or digital mixing board without graphic Eqs, we need 4 stereo graphic Eqs 31 bands / dans le cas d'une table analogique ou sans Eqs graphics intégrés, prévoir 4 Eqs graphiques 31 bandes en rack avec connectiques.
- Merci de fournir les batteries nécessaires pour les micros HF durant toutes les répétitions, un set de piles neuves sera demandé pour chaque représentation / thanks for providing enough batteries for the wireless mics, new batteries must be provided for each show.

• VIDEO •

Supply by the theater / Fourni par le théâtre :

- 1 video projector 6000 lm at least (from the tech board to the cyclorama) image full height on the back drop Cyclorama.
- video cable beamer to tech desk (the video is played from a MacBook, out in HDMI or VGA, 16:9 format).

Superamas brings:

- We come with our own video projector: 1 x BenQ MX812ST used on stage.
- We come with our own screen: 1m80 wide x 1m high used on stage.

• SET •

Supply by the theater / Fourni par le théâtre :

- 1 **white & clean cyclorama** up stage as back drop (**it has to be perfectly clean and opaque white**; it will be used as screen for the big video projection). We need entrances for the performer stage back right & left (jardin & cour en haut de scène) if there is just one we need to let a way behind the cyclorama around 1m large.
- Black & clean dance floor.
- 4 black legs 1m50 / 1m70 large
- 4 black legs 3/4m large (the 2 front ones can be the main curtain)
- 5 black borders high to cut at 6m (the front one can be the theatre frame)
- 1 moving pipe 14m long, down stage behind the frame (or front curtain), **moving up and down during the show. We do NOT come with pulleys and rope, it has to be supplied by the theatre if needed. If done with pulley we need a pulley block to divide by 2 the strength to pull up the pipe with the tulle or to do it with a counterweight.**

Superamas brings:

- We bring our tulle (gauze, scrim) 14m wide x 6,2m high that has to be manipulated (from down to up) during the show by a technician from the theatre, that for this we need the pipe 14m long.

IMPORTANT:

- We use fake guns with white led lights & red laser beamer on stage, see list at the end.
- We use stroboscopic lighting effects.
- We hang up an "atomizer system"/"système de brumisation" which spreads around 5/10 liters of water on the dance floor at the end of the show. We don't bring any kind of floor protection (as plastic cover), if needed the theater should provide such a floor protection to set under the dance floor. We experienced, that the dancefloor, carefully taped, is protecting the floor.

• COSTUMES •

We need a good, professional dresser for washing, ironing, dry cleaning and sewing the costumes (from the venue). See washing instructions at the end.

• IMPORTANT •

For the transport please note, that NO Superamas crewmember will be at the theatre when our material is arriving. Everything is in flight cases on wheels and normally the flight cases may arrive up to three days before the setup. Please note that the material will normally not be picked up on weekends or holidays. The theatre provides a space where the flight cases can be stored. The cases are heavy so we need to know if there is a loading dock or if the truck need a lift to delivery.

• AUDIENCE SPACE •

Please note that seats outside the stage frame can only be sold after confirmation by superamas.

• OTHERS •

For each performance :

Please provide showers with warm water and towels. We already need towels for the rehearsals!
Please provide soft catering (mineral water, fruits, chocolate) for set up days as well as for performance days.
Please provide water in bottles, 1 bottle of good whisky, 1 bottle of good vodka, 1 box of beer.

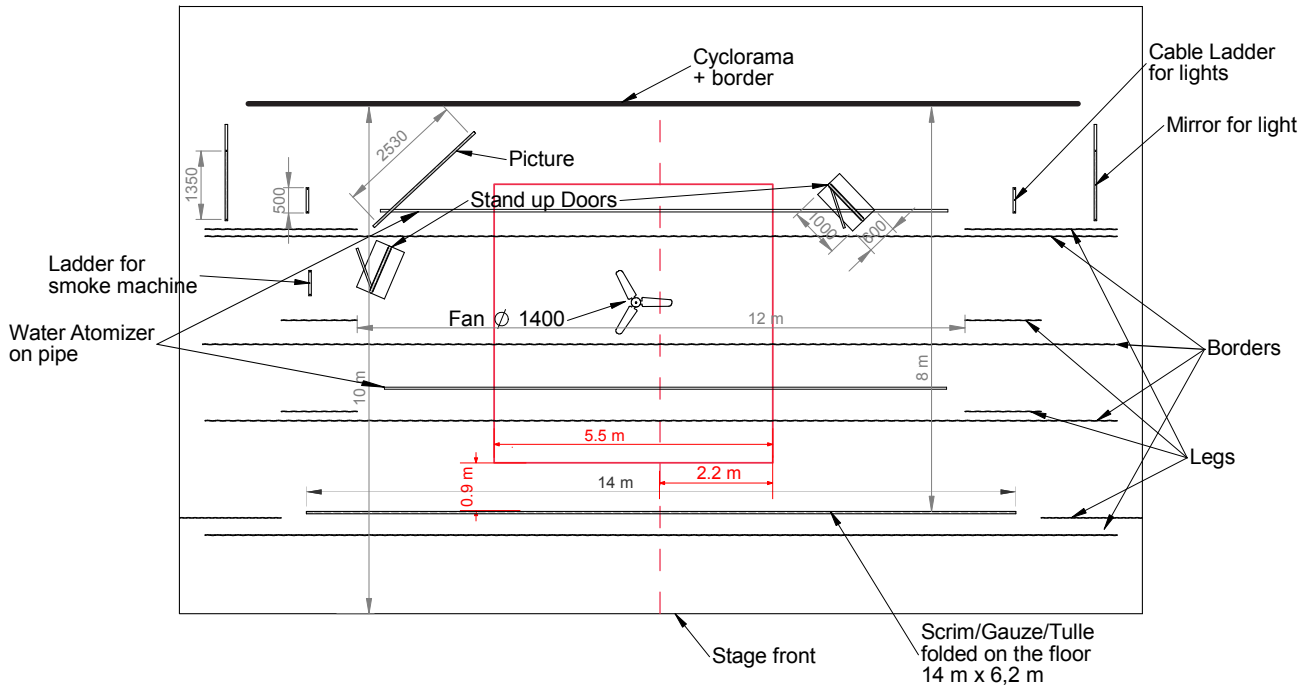
• FLIGHT CASES LIST •

<i>Performance</i>	<i>Width mm</i>	<i>Length mm</i>	<i>Surface m2</i>	<i>Height with rolls mm</i>	<i>Weight Kg</i>	<i>Volume m3</i>
Vive l'Armée n°1 Costumes	600	1220	0,73	1750	150	1,28
Vive l'Armée n°2 Pump	700	1800	1,26	1641	300	2,07
Vive l'Armée n°3 Doors	630	2200	1,39	1341	300	1,86
Vive l'Armée n°4 Lights	620	1220	0,76	785	75	0,59
Total Vive l'Armée			4,13		713	5,80

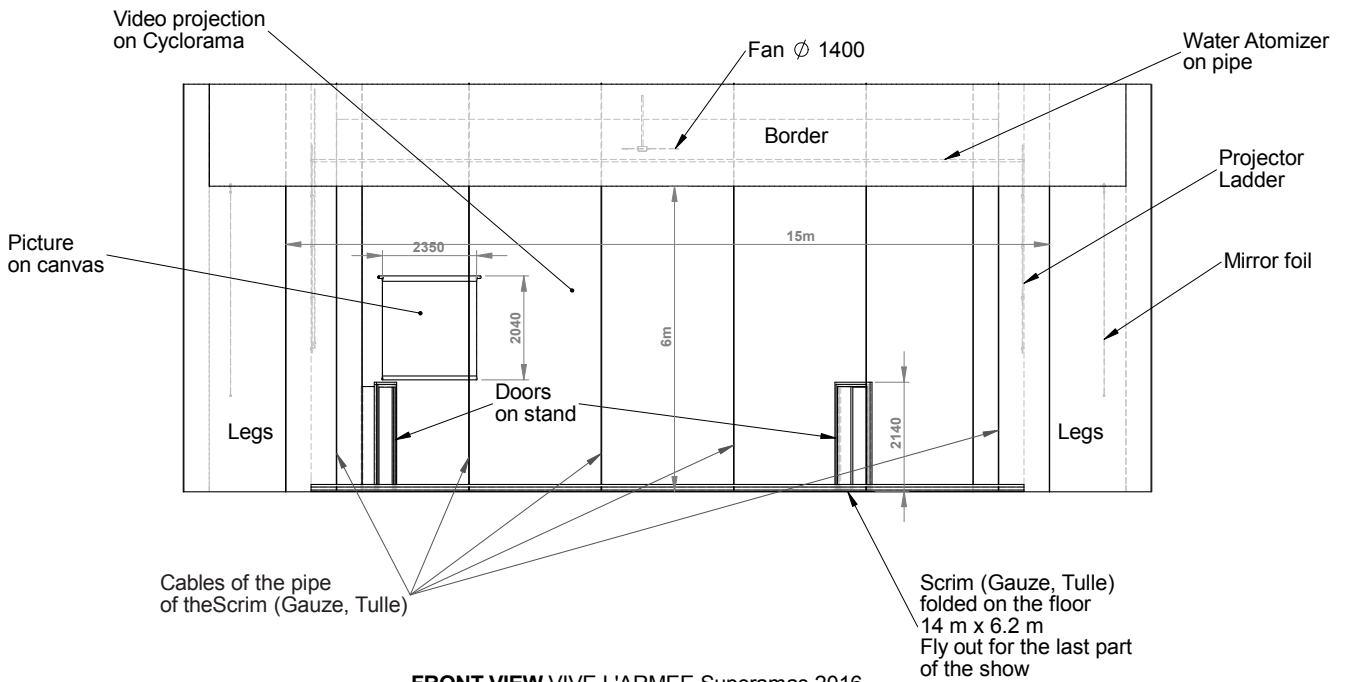
• SCHEDULE •

Time schedule		Light	Sound/Video	Stage	Dresser	Remarks
SETUP/MONTAGE DAY 1						
14:00 - 18:00	Setup Lights / Curtains	3		2		
SETUP/MONTAGE DAY 2						
9:00 - 13:00	Setup all / Clean costumes	3	2	1	1	
13:00 - 14:00	Video Set up					
14:00 - 18:00	Focus light	3	2			
18:00 - 19:00	Floor marks with performer					
19:00 - 21:00	Rehersal	1	1	1		Or 1 allrounder on standby
SHOW DAY 1						
9:00 - 13:00	Programming / Finishing stage	1		1		
14:00 - 15:00	Soundcheck / Videocheck		1			Clean stage / plateau
15:00 - 17:00	Dress Rehearsal	1	1	1		A technician has to move the Tulle during the rehearsal
17:00 - 19:00	Corrections	1	1	1		
19:00 - 20:00	Preparation for Show	1	1	1		Clean stage / plateau
20:00 - 22:00	Show	1	1	1		A technician has to move the Tulle during the show
SHOW DAY 2...						
9:00 - 13:00	Clean costumes				1	
14:00 - 19:00	Répétitions	1	1	1		Or 1 allrounder on standby
		standby	standby	standby		Ou 1 polyvalent en standby
19:00 - 20:00	Preparation for Show	1	1	1		Clean stage / plateau
20:00 - 22:00	Show	1	1	1		A technician has to move the Tulle during the show
After Show	Strike down	2	2	2	1	Clean costumes if possible

• SET PLANS •



TOP VIEW VIVE L'ARMEE Superamas 2016



FRONT VIEW VIVE L'ARMEE Superamas 2016

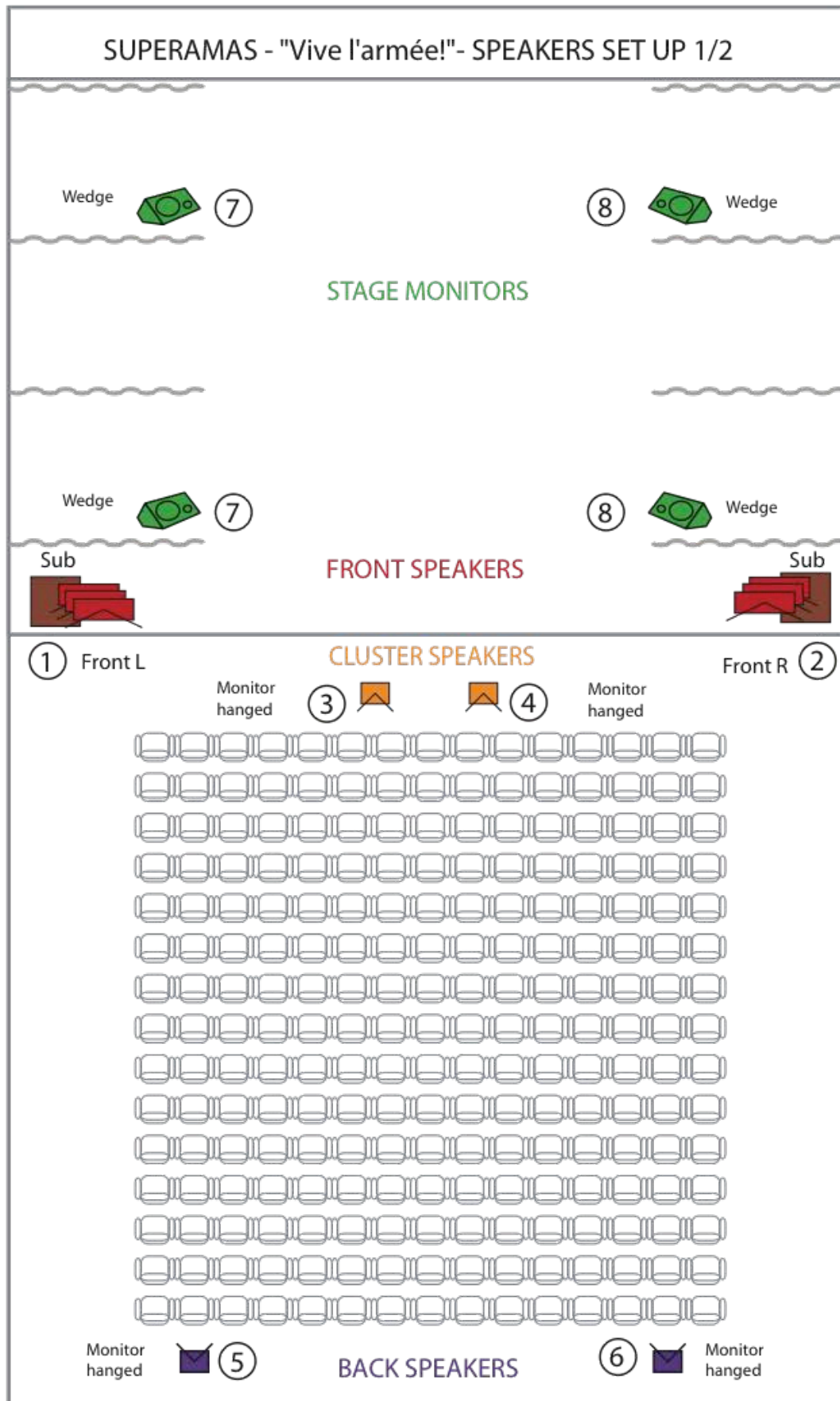


Gauze to the ground
Tulle au sol

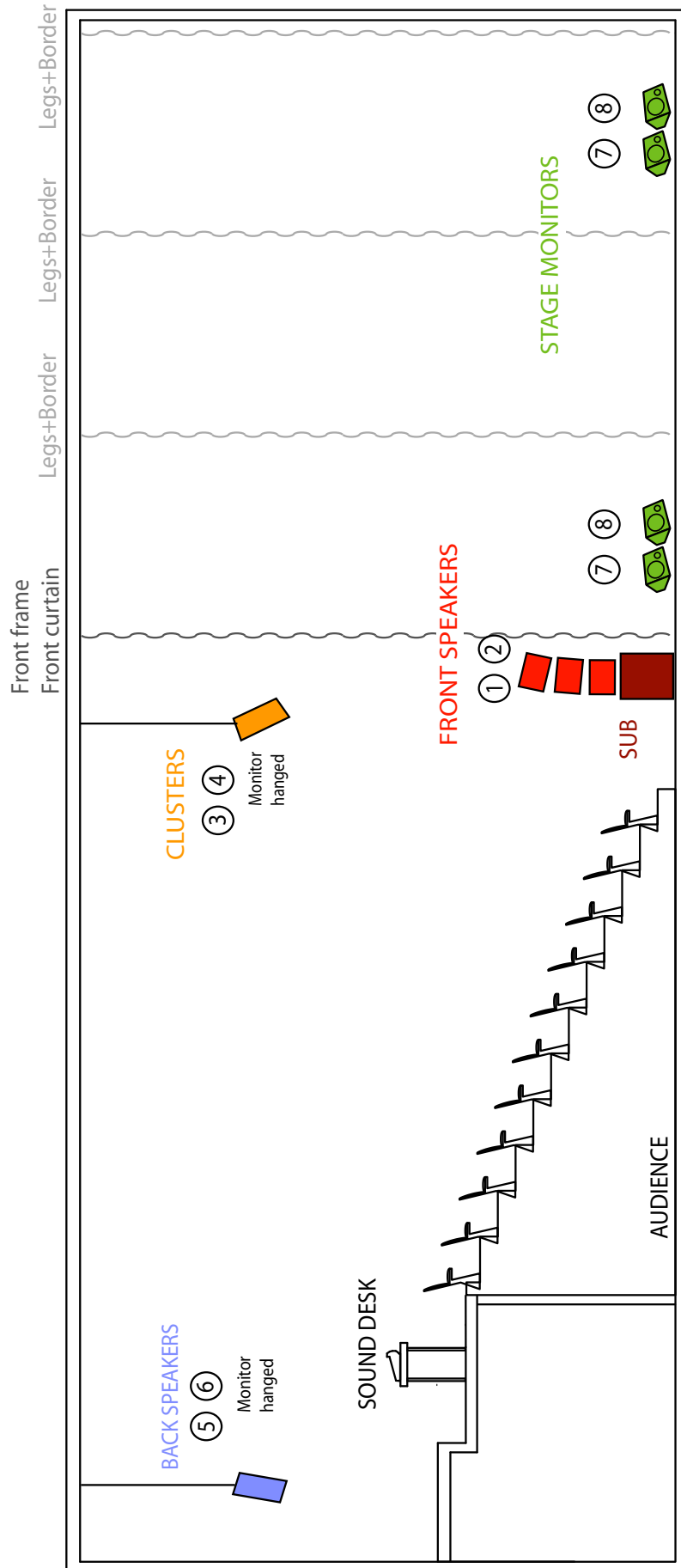


Gauze up
Tulle remonté

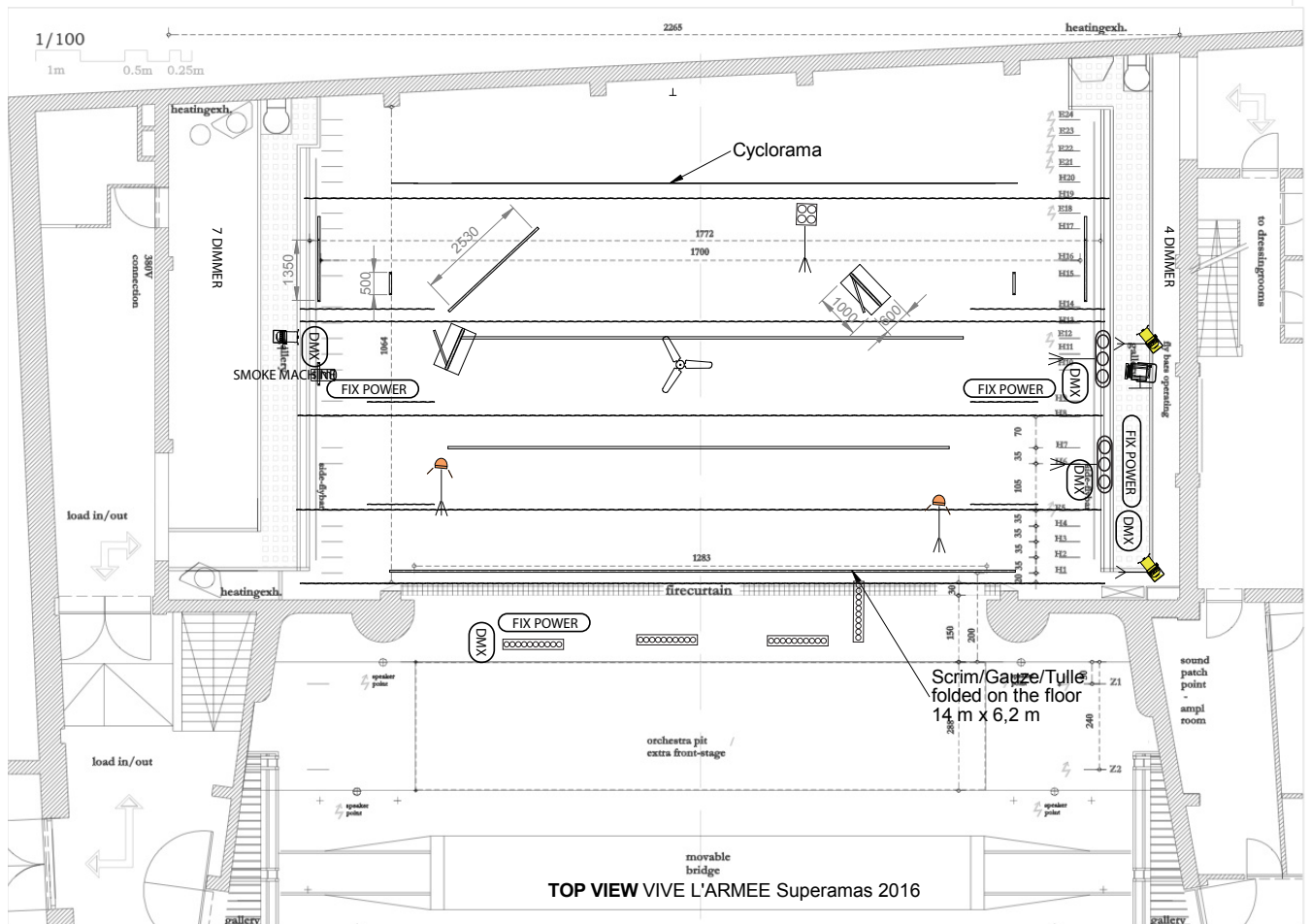
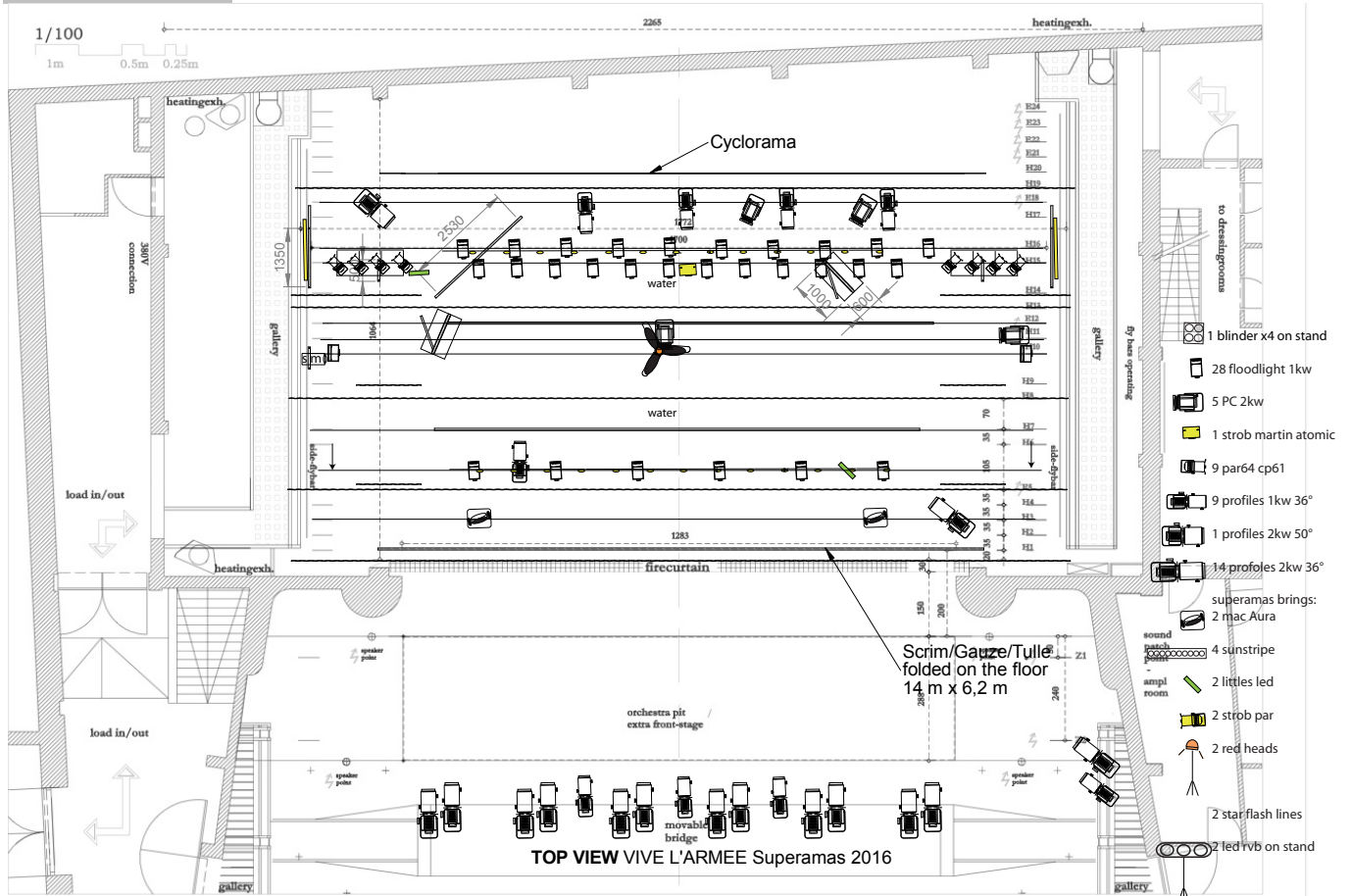
• SOUND PLANS •



SUPERAMAS - "Vive l'armée!" - SPEAKERS SET UP 2/2



• LIGHTS PLANS •



• WASHING INSTRUCTIONS •

NOT ALL ITEMS HAVE TO BE CLEANED FOR EACH SHOW

GIGN

all pants tops and vests are coton and can be washed at 40° and put in the dryer.

Bulletproof vests are also coton and could be washed in the washing machine too, but only if needed.

KISS and Jean Paul Gaultier.

Black Leather Gilet dry clean or freshen up/ no machine

Black leggings coton with zipper machine 40 °

black sky pants handwash

silver overall JP gaultier handwash

black singlet top gaze machine 40°

CATWALK

lace black dress noir handwash (carefull)

white lace blouse handwash

bulletproof vest embroidery no washing

silver underpants handwash

silver leggings handwash

white leggings machine 40°

black tshirt long sleeves net machine 40°

marianne dress en lin handwash or dry clean

blue vest with hood and wool dry clean if needed

neoprene vest blue white red neoprene handwash or dry clean if needed

dark blue vest mattelasé handwash or dry clean

bandana black and red machine 40°

underwear skincolor red and black machine 40°

black short in pailleteshandwash

jacket cote maille silver handwash

sportssocks 40° machine

red skirt bowtie handwash

skincolored corset machine 40°

black top zipper newlook 40° machine

beige linen dress red print handwash

drapeau francais handwash

red sportif top new look 40° machine

JP gaultier black lace pointed brest top handwash

grey antraciet hoodie 40° machine

black bomber metal 40° machine

grey camouflage bomber 40° machine

black stalkings 40° machine

all small props and gloves etc handwash if needed

Chief of Staff

Black dress Mango machine 40°

white blazer Mango machine 40°

skincolored stalkings machine 40°

Negociator

Blue jeans machine 40°

white blouse blue flowers machine 40°

Black long dress Teresa machine 40°

Mr Arnaud

Blue costume dry clean

white shirt 40° machine

Camerawoman Caro

black t-shirt coton 40° machine

black pin striped pants black 40° machine

• **FAKE GUN LIST** •

All the fake guns are blocked barrel airsoft.
The laser pointers are class 2 and are never pointed to the audience.
The Led lamp are 3W Swiss Arms and are never pointed fixedly to the audience.

Guns used on stage

2 airsoft machine guns DS4 plastic/metal black, blocked, with red laser pointer class 2 and micro lamp LED 3W Swiss Arms.



1 airsoft machine gun DLV36 plastic/metal black, blocked, with red laser pointer class 2 and micro lamp LED 3W Swiss Arms.



1 airsoft machine gun DLV MP5 BT plastic/metal black, blocked, with red laser pointer class 2 and micro lamp LED 3W Swiss Arms.



1 airsoft machine gun DLV MP5 BT plastic/metal black, blocked.

1 airsoft gun G17 metal/plastic black.



2 airsoft Gun M80 plastic/metal silver/black.



There is other gun fixed in belt holster but they are not used, they just here as costume props.

Laser beamer



White led lamp

